

THE SEAT BELT SOLUTION FOR INDUSTRIAL VEHICLES AROUND THE WORLD



The combination of its unique ergonomic design matched with the electrically switching buckle ensures seat belt compliance by operators regardless if they are under direct supervision or working solo.

Matched with a webbing retractor in 50mm or 75mm high visibility webbing, the **SAFE T BELT** will accommodate the largest operator, including operators wearing equipment such as re-breathers.

Ensuring that your employees wear a correctly fastened seatbelt is one of the most significant changes an employer can make to any safety program involving forklift truck or mobile plant in a short period of time.

Safety is the legal responsibility of the employer and **Safe T Belt** is your partner in achieving that objective.

Designed for use on forklifts, mobile plant and agricultural equipment, **Safe T Belt** is a restraint that sits over the operators lap like a protective halo, allowing them to move in the seat when reversing.

Typically operators remove the seat belt when reversing as its too tight to move in the seat with it fastened.

Safe T Belt overcomes that situation by not locking the operator's hips into the seat, allowing them to swivel in the seat and reverse in safety in the event of a roll over.

Whether it's because they can't be bothered, find them unnecessary or they incorrectly think it's safer to try and jump free in an emergency, the fact is that many operators don't fasten their seat belts, often with tragic results.

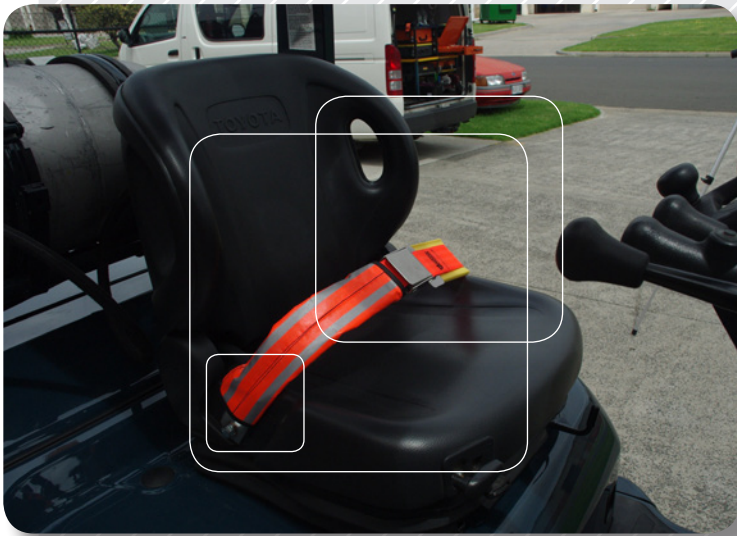
The **Safe T Belt** springs up when unbuckled making it a real nuisance and uncomfortable to operate the machine or mobile plant. When electrically locking out the machinery, it forces operators to wear it correctly and not sit on top of it or pass it under the seat!

Then when it's buckled, it holds the operator firmly, comfortably and safely in his seat. A universal fitting kit makes it easy to install **Safe T Belt** in all common types of mobile machinery.

- **Easy to install**
- **Fits all common types of mobile machinery**
- **Can also be fitted with lock-out features that prevent the vehicle operating**
- **A real nuisance when unbuckled**
- **Comfortable and safe when buckled**

“WHY A SAFE T BELT AND NOT A NORMAL SEATBELT?”

A normal seatbelt if correctly fastened will lock a drivers hips in a forward position, which is comfortable for operators travelling forward however a forklift operator in particular will spend approximately half his time travelling in reverse and the other half in a forward direction. **Safe T Belt** allows the operators the freedom of movement they require while at the same time keeping them safely restrained within the ROPS of the vehicle in the event of an accident.



“WE ALREADY HAVE SEAT BELTS ON OUR EQUIPMENT”

If operators are not wearing the belts provided and this cannot be enforced then what good are the belts when an accident occurs?

If there is an incident where the driver expects a tip over is going to occur **Safe T Belt** will keep the driver inside the protection of the ROPS, where statistics prove there is a greater chance of surviving.

Many industrial vehicles in the last 20 years have lock-out functions built into the seat belt that prevents the transmission engaging, (forward / reverse movement), or disables hydraulic functions such as lifting booms / buckets.

It is not uncommon for operators to plug the conventional seat belt into the buckle and then simply sit on top of the belt webbing, allowing the vehicle to operate normally even though the operator is not actually wearing the seat belt.

Safe T Belt prevents this as it forces the driver to use the seat belt correctly as they cannot sit on top of it or pass it under / around the back of the seat.

“OUR VEHICLES DO NOT HAVE LOCK OUTS FITTED. CAN THIS HELP?”

The term “LOCK-OUT” refers to a device or system on the vehicle that prevents a function or movement occurring until action, such as fastening a seatbelt, by the operator has been initiated.

Many vehicles have seat switches that prevent the transmission from engaging unless they sense an operator sitting in the seat, or hydraulics can be disabled preventing the mast or boom being lifted.

Safe T Belt fits in seamlessly with these existing lockout systems as the buckle has an internal switch and 1.5M wiring loom that can be wired in series with these systems.

If your plant does not have a lock out function installed it is simple to retro-fit using some double throw relays. Once installed it can be wired in series with the **Safe T Belt** for minimal cost and time.

Safe T Belt fits all common types of mobile machinery and on average would take less than 30 minutes to install and be immediately operational.

Safe T Belt complies International Standards ISO-6683, SAE-J386 and FMVSS-302 for the market in the USA.

Safe T Belt can be used with all industrial vehicles, mining and earth moving plant as well as agricultural vehicles such as tractors or harvesters.

Available in 50mm HI-VISIBILITY webbing or in a 75mm black webbing version the **Safe T Belt** will accommodate the largest of drivers in comfort and safety.

